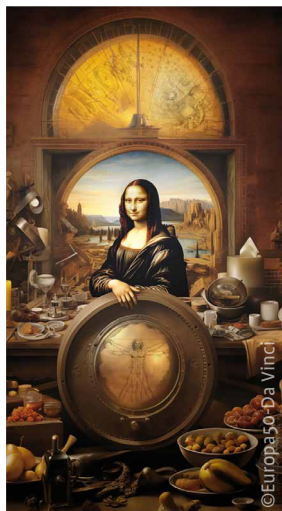
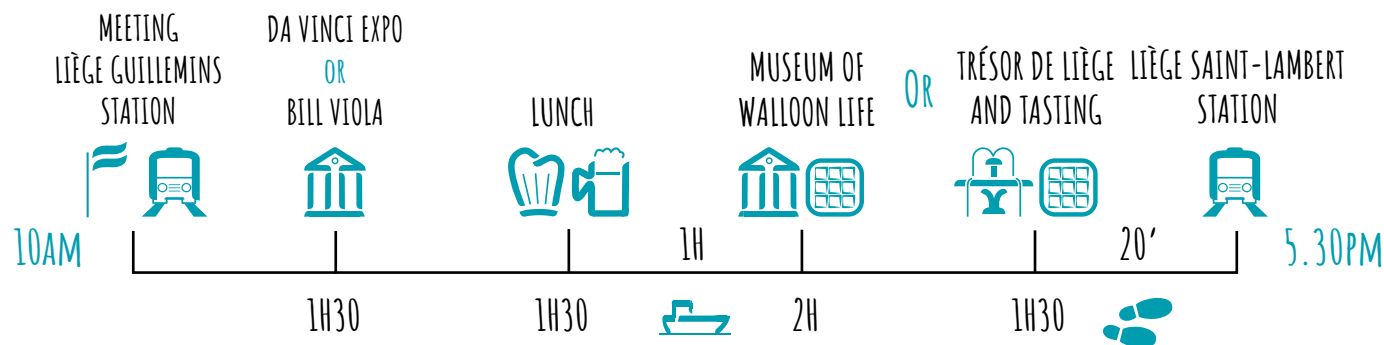


“Liège on display”

Visit the exhibition open at Guillemins station, ‘Da Vinci, the Artist, the Engineer, the Gourmet’ which invites you to gain a better understanding of the undeniable mark this artist has left on History. Or discover the exhibition ‘Bill Viola, Sculptor of Time’ held by La Boverie museum until 28 April. Also note that for the 100th anniversary of surrealism, La Boverie museum is offering a new exhibition, from 4 October dedicated to Paul Delvaux.

After strolling through La Boverie park and enjoying a pleasant lunch, you’ll have the choice between discovering the collections of the Museum of Walloon Life or diving into the history of the old Principality with the Trésor de Liège where there are no fewer than 200 works of art on display. To end the day on a culinary note, savour a real Liège waffle!



STAY TOGETHER !

Adapt this excursion to your group’s profile.

Be inspired by our fact sheets, choose what suits you best, and **contact us for a personalized quote.**

CONTACT

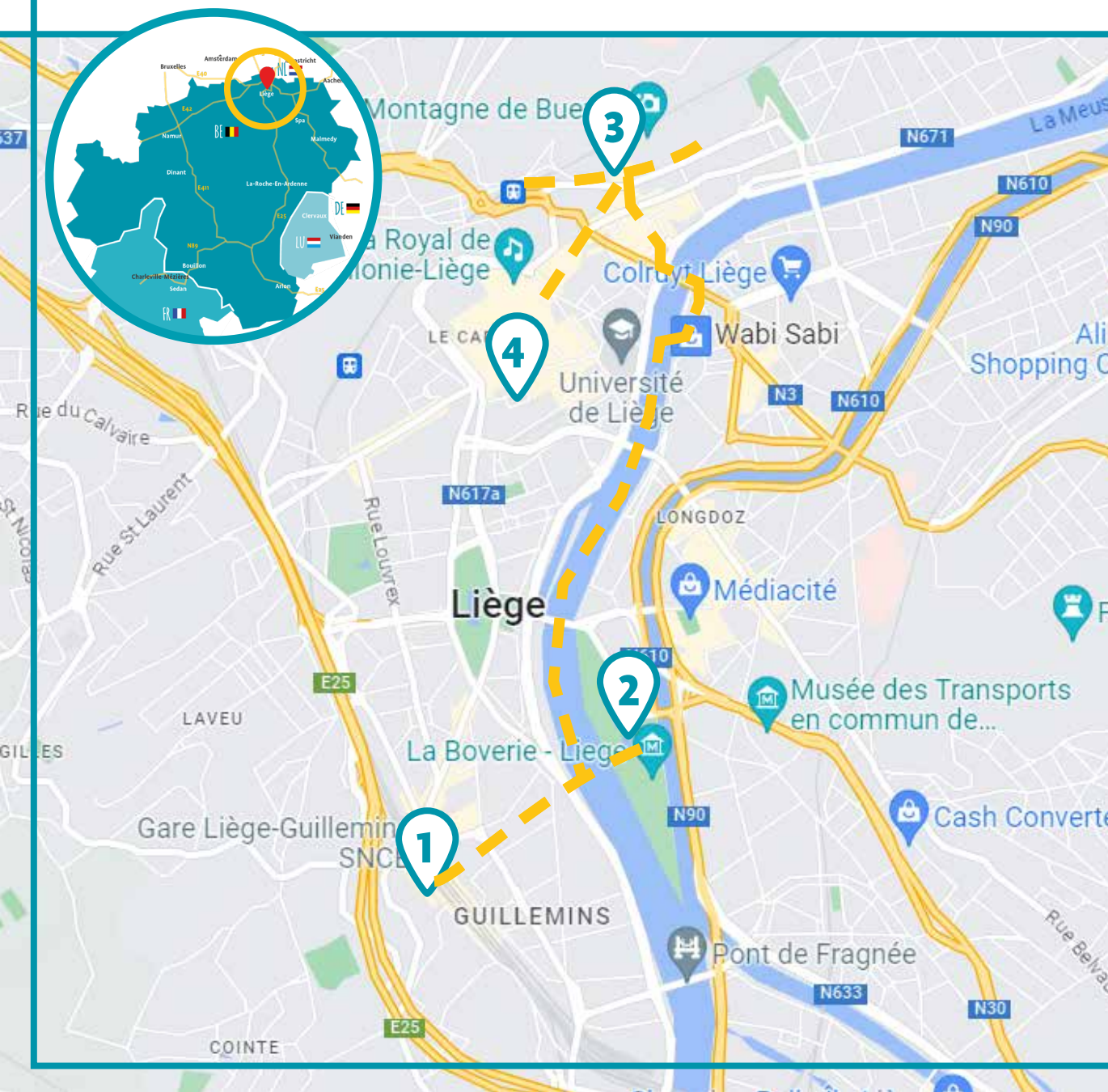


Groups (from 20 people)

ARDENNE INCOMING

c/o Fédération du Tourisme de la Province de Liège
Place de la République française 1 - 4000 Liège (BE)
Tél. +32 (0)4 279 50 88
info@ardenneincoming.be
EN.ARDENNEINCOMING.BE

LOCATION



1. LIÈGE GUILLEMINS STATION



2. LA BOVERIE



3. MUSEUM OF WALLOON LIFE



4. TRÉSOR DE LIÈGE

